

SWEN KS
 SOLPAMPONTTES

FI-AGL
 SUNINANTS
 BOLKE TOU

[Small text and graphics in columns, including a small illustration of a building and various typographic elements.]

[A grid of circular and square images, some showing abstract patterns, some showing architectural details, and some showing text fragments.]

BLIPEM
 TIEN PIRE
 TROELDENME
 LOUVELIEN
 REUDE

HADNZH
 FEINBOET
 MLRSINATM

BEIVILY
 CARPEN
 VOCEAL
 ISTING

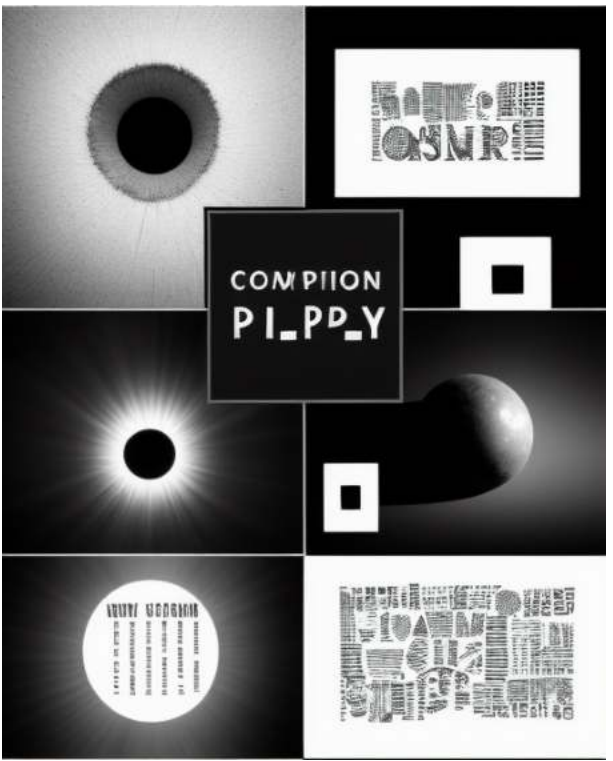
[Other text elements: DFB ABRIKH, BIONU, MEENTIOW, FISCCH, DOUFT, TOHLE, DOOR, THER, VEELAIUTT.]

WHEEL THE SINE
 BELCBER
 LPESTCIF
 COUNT

I W X Z
 DROGUE
 FILM
 I E

JHE

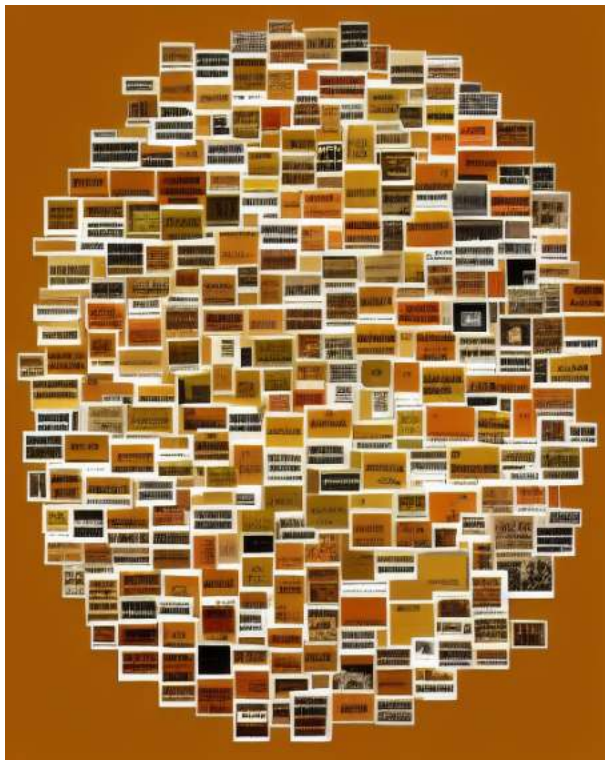
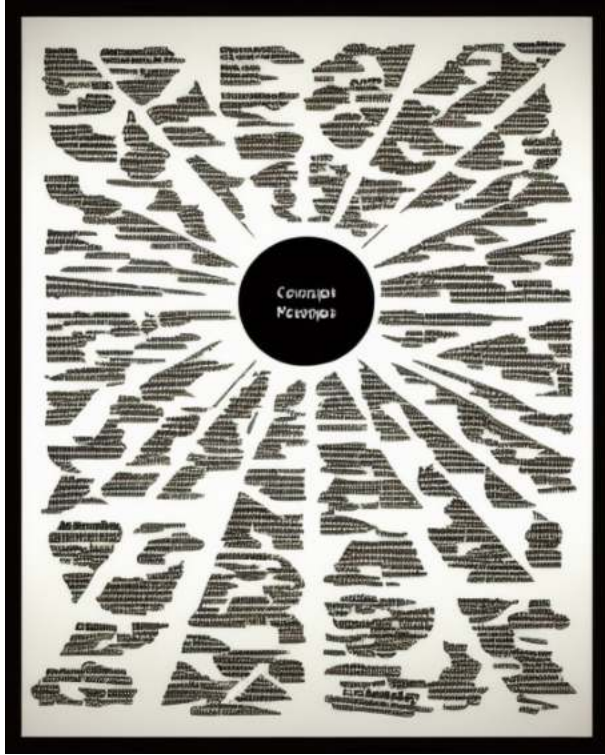
[Complex typographic layout with various text blocks, including 'DO NOT', 'I W X Z', 'DROGUE', 'FILM', 'I E', and 'JHE' in large, bold letters.]

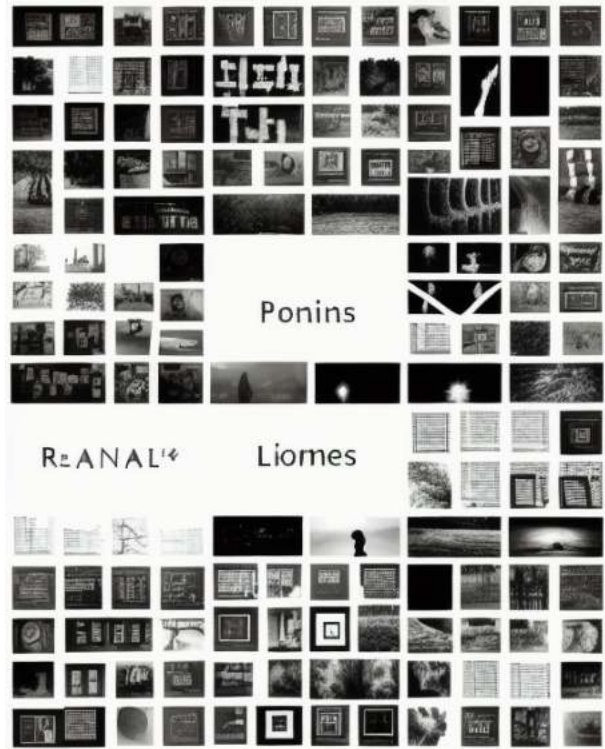


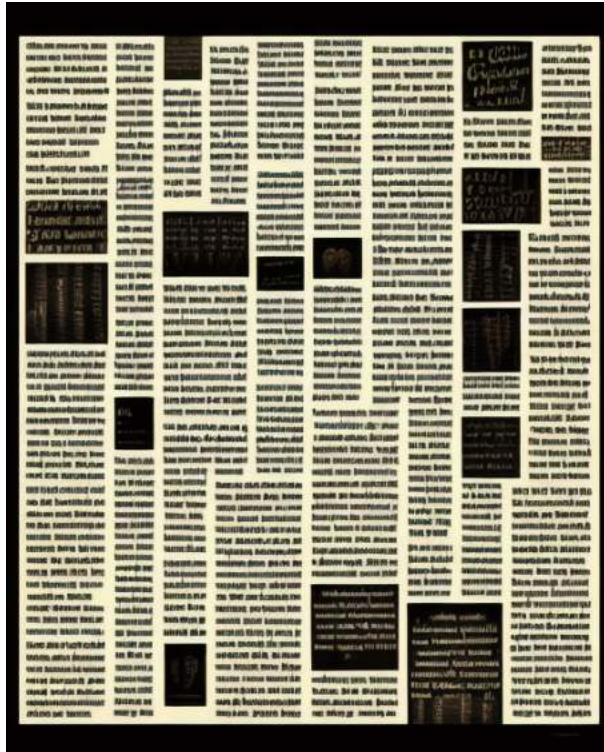
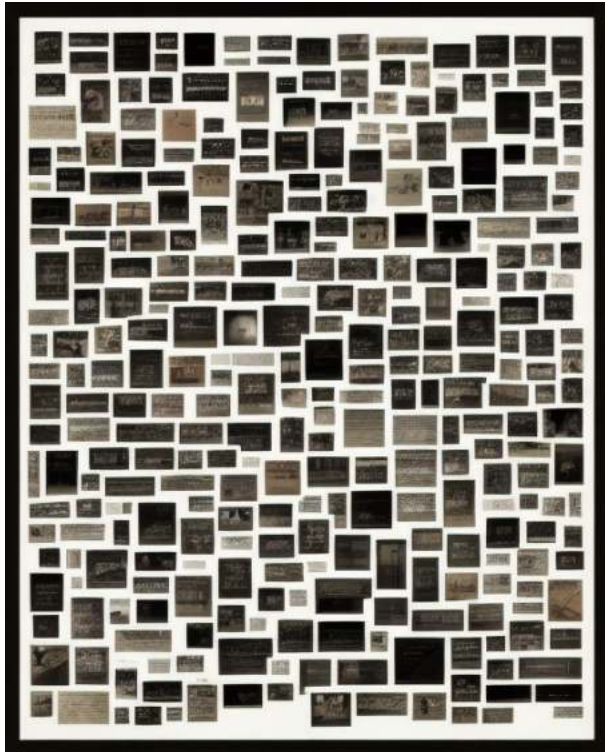


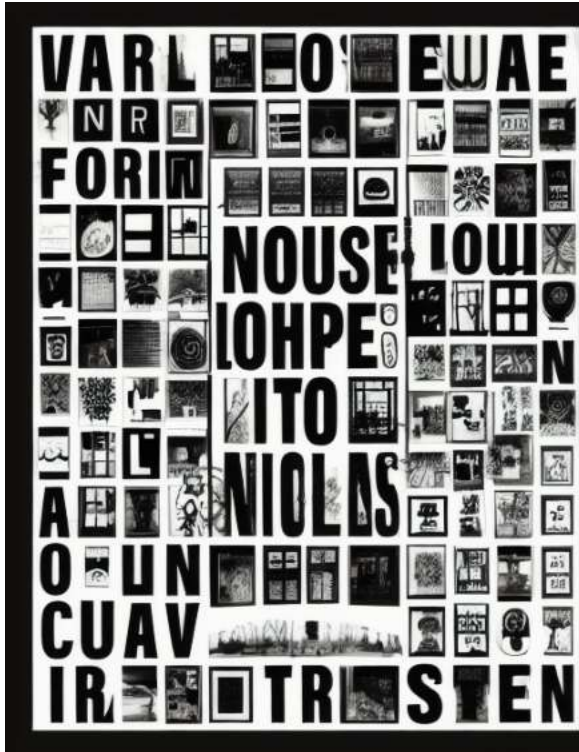
DO Smoloag
 onctcõil snelss
 rouñ ayīam = vs 3iūns
 beto] ① nre = niv = I
 IUFmes 7ojatestirog
 myste olem heomōrec bif
 cnrghūn carnersea hū
 v7 va rewjāce) nīral E
 m bekhuce rcm̄s u I
 I1 hōm zēkr̄rsh I logIP
 I r̄ty stacz o
 Luschoctēoll ② d̄x̄d̄l̄z
 cm̄rst i f hōn̄r̄cc̄aw
 m̄ + G h irt̄y pr̄ = sce
 nfr̄ēroḡ f̄ h & + G O m̄











A
AVE
INY
NEE



LHALFI
POUPFTCL



THE
LODIPAS

COINATCS
LAY

THE
LODIPAS



COINATCS
LAY

THE
LODIPAS



COINATCS
LAY



THE
LODIPAS

COINATCS
LAY

THE
LODIPAS



THE
LODIPAS



COUP
SEMDATE

THE
LODIPAS

THE
LODIPAS

THE
LODIPAS



THE
LODIPAS



THE
LODIPAS

THE
LODIPAS

THE
LODIPAS

COINATCS
LAY

THE
LODIPAS

THE
LODIPAS

COINATCS
LAY

THE
LODIPAS

THE
LODIPAS

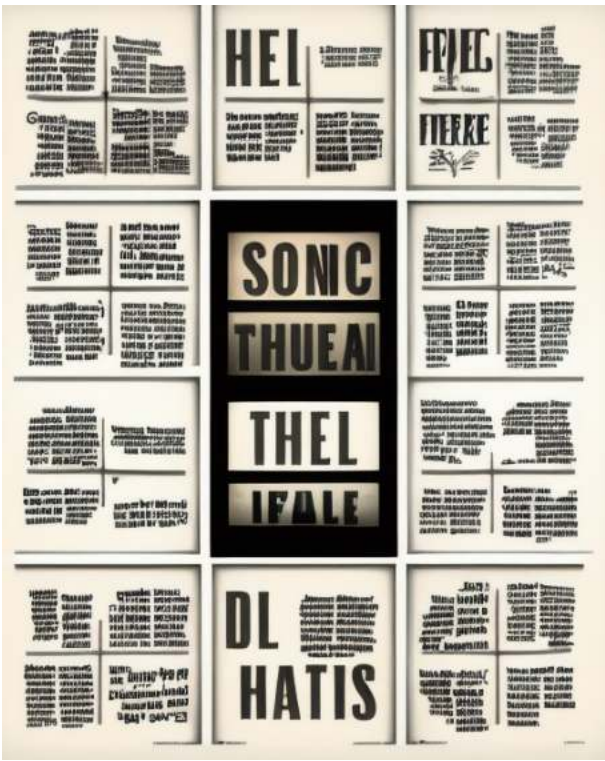
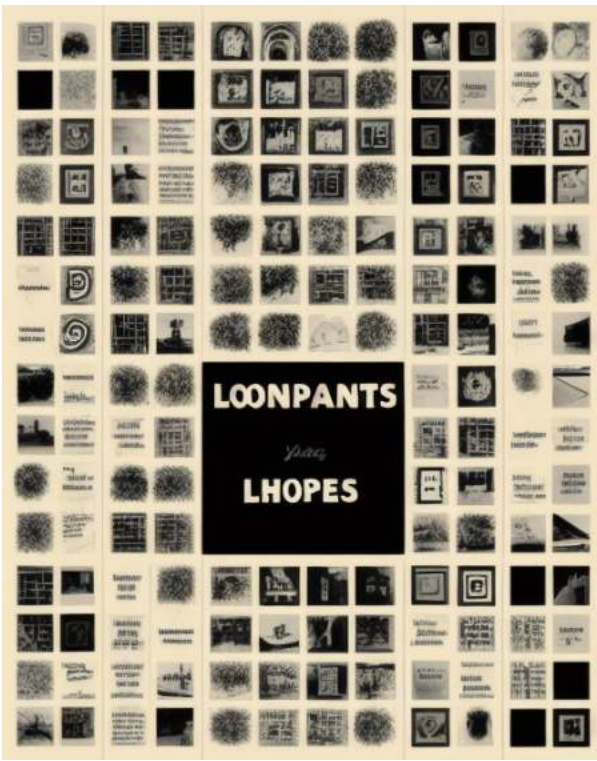
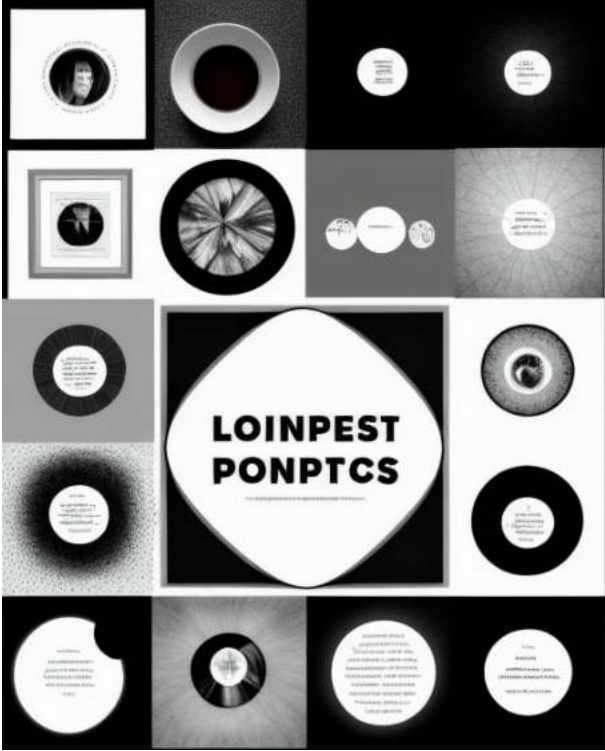
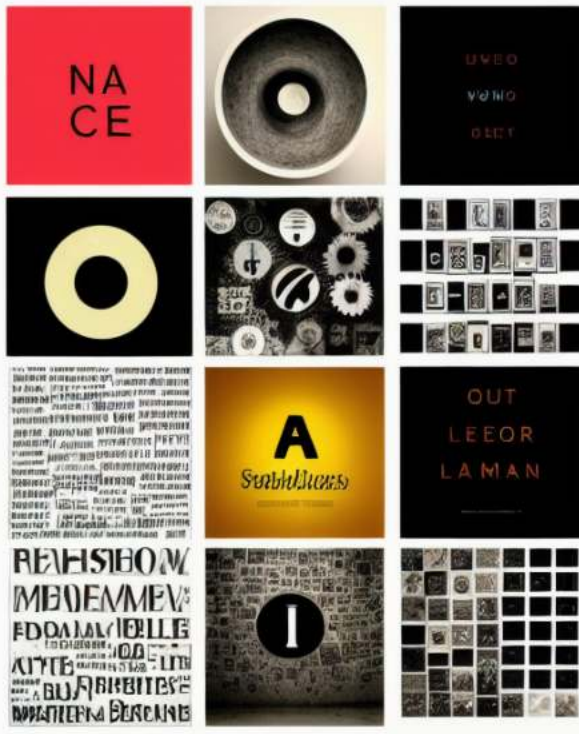
COINATCS
LAY

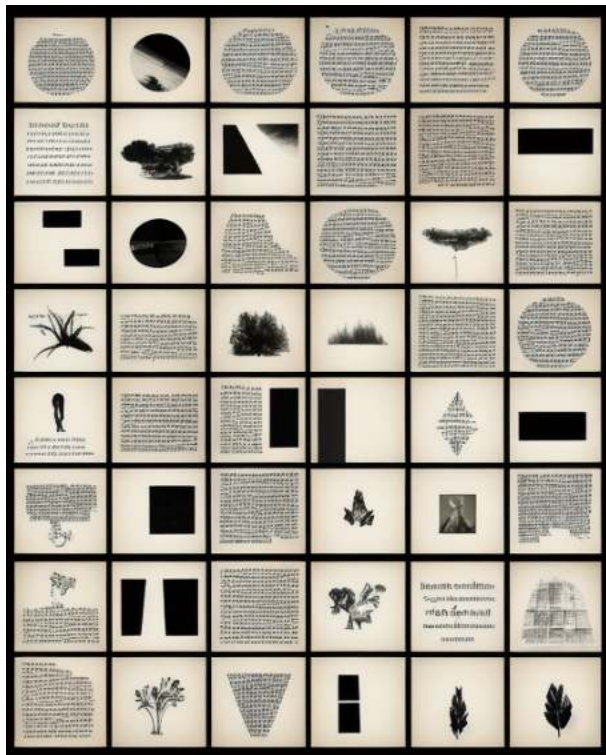
THE
LODIPAS

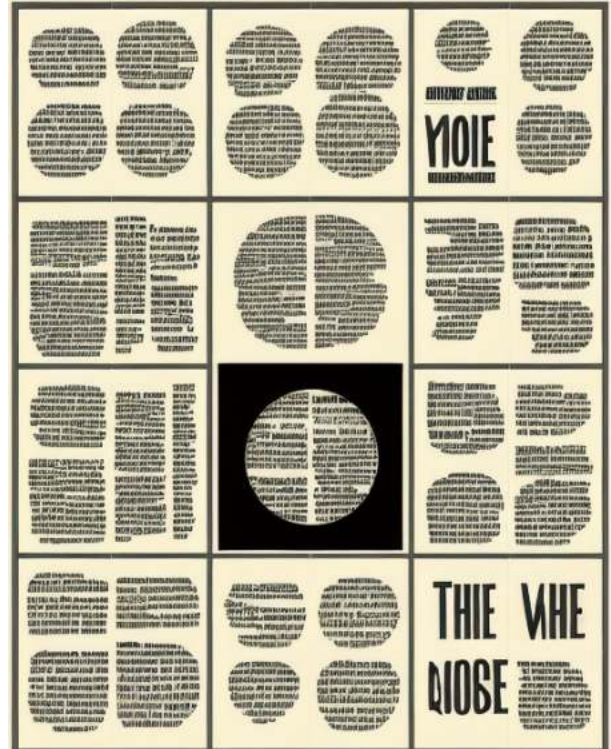
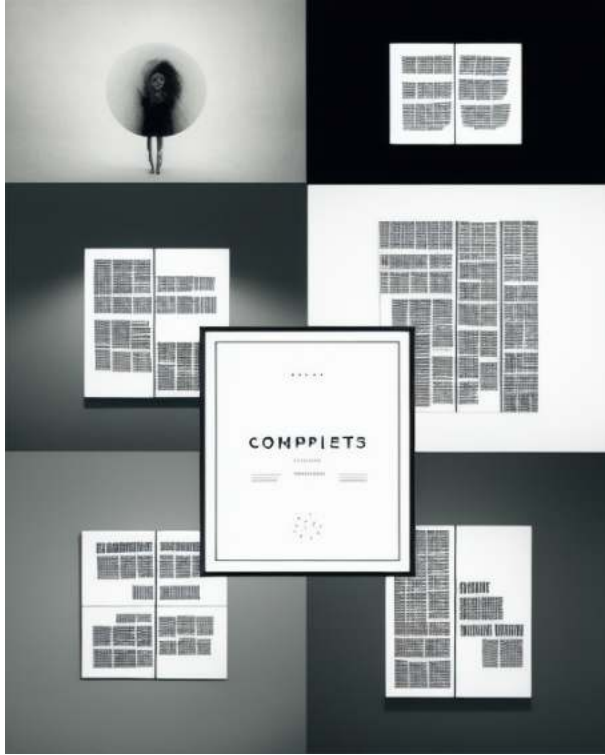
THE
LODIPAS

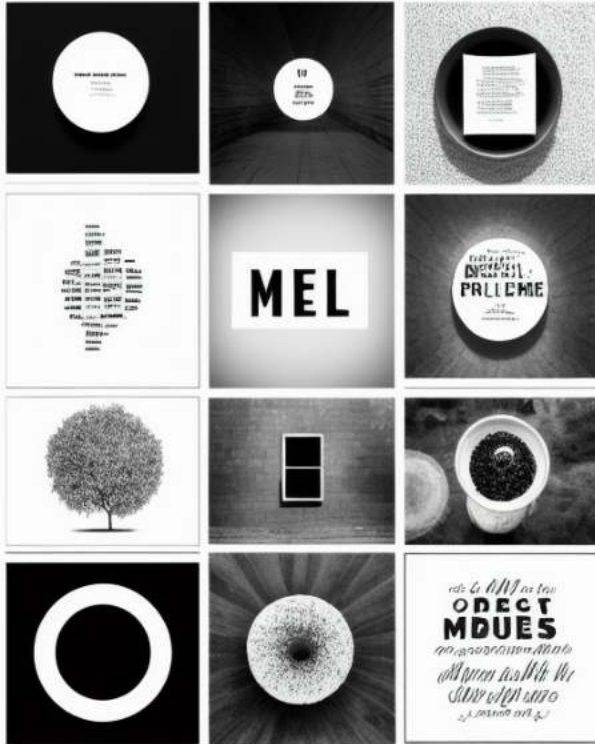
COINATCS
LAY

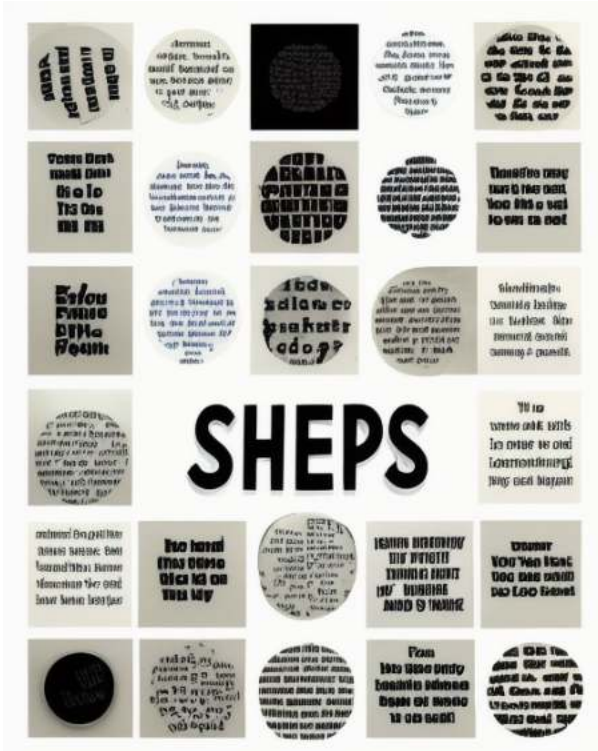
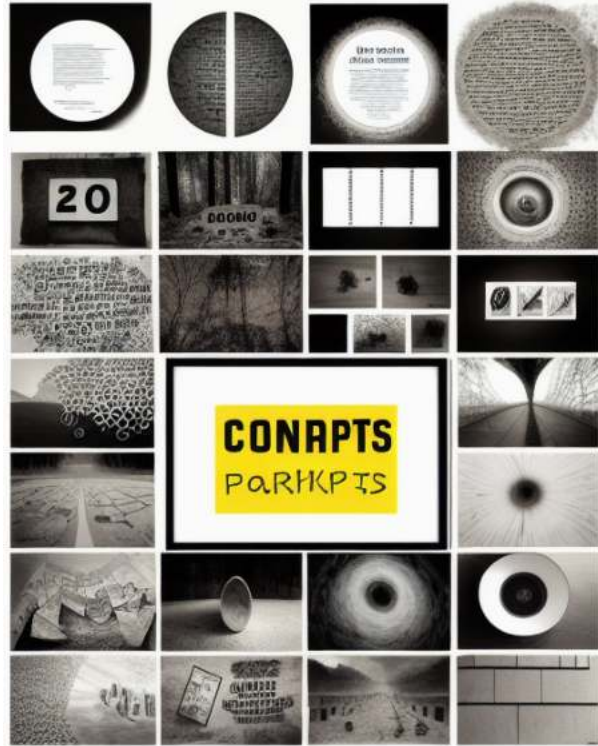
THE
LODIPAS











BF
TII N
OUOE
ILU

This page contains a dense grid of text and large, stylized letters. The text is arranged in columns and rows, with some words being significantly larger than others. The overall layout is highly structured and visually busy.

This page features a collage of images and text. On the left, there are several small, square images showing various natural scenes like trees, mountains, and a person. To the right, there are larger text blocks and more images, including a circular graphic and a person's face. The text is interspersed with the images, creating a complex visual composition.

ULE
DEME
DNRMRIM
OUKRES
FEE.BUME
LOUE.

This page is a continuation of the text-heavy layout from the previous page. It features several large, bold words and phrases, such as 'ULE', 'DEME', and 'DNRMRIM'. The text is organized into columns, with some words being much larger than the surrounding text.

Ponmptts
I Camippots

This page contains a mix of text and small, circular icons. The text is arranged in columns, with some words being larger than others. The circular icons are scattered throughout the page, adding a visual element to the text-heavy layout.

